

NEET UG SPECIAL CHAPTER WISE TEST
NKB-01

Q. Types : Easy	Moderate	Difficult	Total
Q. Number : 20	20	10	50
Max. Marks : 80	80	40	200

**ALL INDIA
TEST SERIES**
TOPIC-ANIMAL TISSUE

Date	05 July-24
Time	50 minutes

INSTRUCTIONS-

- ❖ This test is purely based on pattern of NEET(UG)–2025
- ❖ Before attempting the question paper ensure that it contains all the pages and no question is missing.
- ❖ The important points to note:
 - Each question carries 04 (four) marks and, for each correct answer candidate will get 04 (four) marks.
 - For each incorrect answer, 01 (one) mark will be deducted from the total score.
 - To answer a question, the candidate has to find, for each question, the correct answer/ best option.
 - However, after the process of the challenge of key, if more than one option is found to be correct then all/any one of the multiple correct/best options marked will be given four marks (+4).
 - Unanswered/Unattempted questions will be given no marks. In case, a question is dropped/ ignored, all candidates will be given four marks (+4) irrespective of the fact whether the question has been attempted or not attempted by the candidate.

OUR EXPERT AND RESPECTED TEACHERS

PHYSICS	ISHAN SIR , ANJALI MAM , GUDIYA MAM,NITIN SIR
CHEMISTRY	ASHUTOSH SIR, MAHEK MAM, HIMANSHU SIR
BIOLOGY	KAPIL SIR , NITIN SIR , PRASHANT SIR,MAHEK MAM

ABOUT IAMC

Indo Asian Medical Consultancy provides various services for NEET Students, from mentorship programs, free batches, Test series to admission in one of the most prestigious college associated with IAMC. For more info [CLICK HERE](#)

1. Given below are two statements :

Statement I :

Cardiac muscle is an voluntary muscle.

Statement II :

Ciliated epithelium is modified squamous cells and bear cilia on their free surface.

In the light of the above statements, choose the correct answer from the options given below

- (1) Both Statement I and Statement II are incorrect
- (2) Statement I is correct but Statement II is incorrect
- (3) Statement I is incorrect but Statement II is correct
- (4) Both Statement I and Statement II are correct.

2. Malpighian tubules are :

- (1) Excretory organ of arthropoda
- (2) Excretory organ of annelids
- (3) Respiratory organ of insects
- (4) Respiratory organ of annelids

3. Given below are two statements ; one is labelled as Assertion (A) and the other is labelled as Reason (R)

Assertion (A) :

Areolar tissue present beneath skin and it is a connective tissue.

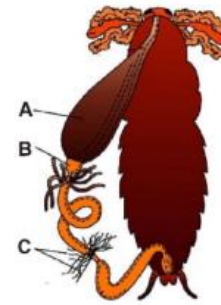
Reason (R) :

In areolar tissue fibre and fibroblast are compactly packed.

In the light of the above statements, choose the correct answer from the options given below :

- (1) Both (A) and (R) are correct but (R) is not the correct explanation of (A)
- (2) (A) is correct but (R) is not correct
- (3) (A) is not correct but (R) is correct
- (4) Both (A) and (R) are correct and (R) is the correct explanation of (A)

4. Identify A, B, C in diagram:



- (1) A - Hepatic Caeca, B - Crop, C - Malpighian tubules
- (2) A - Crop, B - Gizzard, C - Malpighian tubules
- (3) A - Gizzard, B - Crop, C - Hepatic Caeca
- (4) A - Crop, B - gastric caeca, C - Malpighian tubules

5. Given below are two statements: one is labelled as Assertion (A) and the other is labelled as Reason (R)

Assertion (A):

Cockroach is ureotelic

Reason (R):

Malpighian tubules absorb nitrogenous waste product and convert them into uric acid which is excreted out through the hindgut.

In the light of the above statements, choose the correct answer from the options given below:

- (1) Both (A) and (R) are correct but (R) is not the correct explanation of (A)
- (2) (A) is correct but (R) is not correct
- (3) (A) is not correct but (R) is correct
- (4) Both (A) and (R) are correct and (R) is the correct explanation of (A)

6. Match Column-I with Column-II and select the correct option:

Column-I

Epithelial tissue

- a. Cuboidal
- b. Ciliated intestine
- c. Columnar fallopian tube
- d. Squamous

- (1) a -i, b-ii, c-iii, d-iv
- (2) a -ii, b-iii, c-i, d-iv
- (3) a -iv, b-iii, c-ii, d-i
- (4) a -iii, b-iv, c-i, d-ii

7. Match Column-I with Column-II and choose the correct option:

Column-I

- a. Loose connective tissue
- b. Dense regular
- c. Dense irregular connective tissue
- d. Specialized connective tissue

Column-II

- i. Tendons and ligaments
- ii. Skin connective tissue
- iii. Cartilage, bones, blood
- iv. Fibroblasts, macrophages and mast cells

- (1) a - i, b - iv, c - ii, d - iii
- (2) a - i, b - iv, c - iii, d - ii
- (3) a - iv, b - i, c - ii, d - iii
- (4) a - iv, b - ii, c - i, d - iii

8. Which statement is correct:

- (1) In Hydra number of cells in each type can be in thousands
- (2) The human body is composed of billions of cells
- (3) Tissue is a group of similar cells along with intercellular substances perform a specific function
- (4) All of these

9. Movement of mucus in a specific direction over epithelium is function of:

Column-II

Location

- i. Wall of blood vessels
- ii. Lining of stomach and intestine
- iii. Inner lining of fallopian tube
- iv. Duct of glands

- (1) Columnar epithelium
- (2) Cuboidal epithelium
- (3) Ciliated epithelium
- (4) Squamous epithelium

10. In frog the gaseous exchange during hibernation and aestivation takes place through:

- (1) Buccal cavity
- (2) Lungs and Buccal cavity
- (3) Skin
- (4) Lungs

11. In Frog RBC's are:

- (1) Anucleated with Haemoglobin
- (2) Nucleated without Haemoglobin
- (3) Anucleated without Haemoglobin
- (4) Nucleated with Haemoglobin

12. Bidder's canal is present in:

- (1) Testes of frog
- (2) Kidney of male frog
- (3) Kidney of female frog
- (4) 2 and 3 both

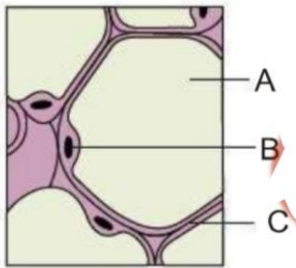
13. Presence of Nictitating membrane is the characteristic of:

- (1) Cockroach
- (2) Frog
- (3) Earthworm
- (4) 1 and 2 both

14. Special venous connection between liver and intestine in frog is:

- (1) Hepatic portal system
- (2) Renal portal system
- (3) 1 and 2 both
- (4) None

15. Identify A,B,C in diagram:



- (1) A - Fat storage area, B - Nucleus, C - plasma membrane
- (2) A - Fibroblast, B - Nucleus, C - Macrophage
- (3) A - Fat storage area, B - Fibroblast, C - plasma membrane
- (4) A - Plasma membrane, B - Fibroblast, C - collagen fibres

16. Which statement is correct:

- (1) Antennae of cockroach monitor the environment
- (2) In columnar epithelium cells are scale like
- (3) In proximal convoluted tubule squamous epithelium is found
- (4) Compound epithelium is made of single layer of cells

17. Given below are two statements :

Statement I :

Our heart consists of all the four types of tissue epithelial, connective, muscular and neural.

Statement II :

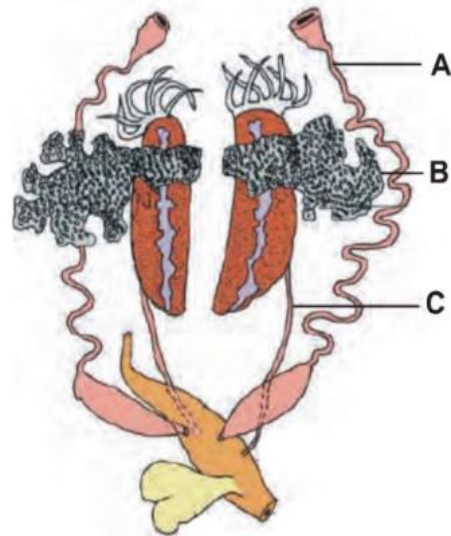
Inner lining of ducts of Salivary glands and of pancreatic duct made up of compound epithelium.

In the light of the above statements, choose the correct answer from the options given below

- (1) Both Statement I and Statement II are incorrect
- (2) Statement I is correct but Statement II is incorrect
- (3) Statement I is incorrect but Statement II is correct

(4) Both Statement I and Statement II are correct.

18. In given figure Identify A, B and C :



- (1) A - Ovary, B - Oviduct, C - Ureter
- (2) A - Oviduct, B - Ovary, C - Ureter
- (3) A - Ureter, B - Ovary, C - Oviduct
- (4) A - Vasa efferentia, B - Testis, C - Ureter

19. When two or more organs perform a common function by their physical and chemical interaction, they together form a

- (1) Tissue system
- (2) Organ system
- (3) Tissue
- (4) Organ

20. Main function of compound epithelium is

- (1) Provide protection against mechanical and chemical stresses
- (2) Unlimited roll in secretion and absorption
- (3) Move particles or mucus in specific direction
- (4) All of these

21. Which is a correct statement :

- (a) Tight junctions are well developed in cartilage cell
- (b) Neurons are the unit of nervous system
- (c) Gap junctions provide no exchange

(d) Ligament is a dense regular connective tissue

- (1) Only a & b (3) Only c
(2) Only b & c (4) Only b and d

22. Which connective tissue is characterized by solid and pliable intercellular material :

- (1) Cartilage
(2) Ligament
(3) Areolar tissue
(4) Bone

23. Given below are two statements :

Statement I :

Hepatic portal system and Renal portal system both are present in Frog.

Statement II :

Special venous connection between Kidney and lower part of the body is called Renal portal system.

In the light of the above statements, choose the correct answer from the options given below

- (1) Both Statement I and Statement II are incorrect
(2) Statement I is correct but Statement II is incorrect
(3) Statement I is incorrect but Statement II is correct
(4) Both Statement I and Statement II are correct.

24. Given below are two statements: one is labelled as Assertion (A) and the other is labelled as Reason (R)

Assertion (A):

Alimentary canal of frog is short

Reason (R):

Frogs are carnivores

In the light of the above statements, choose the correct answer from the options given below:

- (1) Both (A) and (R) are correct but (R) is not the correct explanation of (A)
(2) (A) is correct but (R) is not correct

(3) (A) is not correct but (R) is correct

(4) Both (A) and (R) are correct and (R) is the correct explanation of (A)

25. In cockroach tegmina is:

- (1) Metathoracic wing
(2) Hind wing
(3) Forewing
(4) Mouth part

26. Name the structure in mouth parts of cockroach, which is a median flexible lobe and lies within the cavity enclosed by the mouth parts:

- (1) Maxilla
(2) Labium
(3) Hypopharynx
(4) Labrum

27. The body of cockroach divisible into how many distinct regions:

- (1) 3 (2) 4
(3) 2 (4) 20

28. Head of cockroach is formed by how many segments:

- (1) 6
(2) 7
(3) 8
(4) 10

29. Which segment in female cockroach is boat shaped:

- (1) 10th sternum
(2) 6th sternum
(3) 8th sternum
(4) 7th sternum

30. In cockroach the testes are situated at which segment of abdomen :

- (1) 7th - 9th
(2) 2nd - 3rd
(3) 4th - 6th
(4) 9th - 10th

31. In cockroach each ovary is formed by how many ovarioles :

- (1) 8
- (2) 6
- (3) 7
- (4) 9

32. Correct about intercalated disc

- (1) Found in cardiac tissue
- (2) Found at all fusion points
- (3) Both 1 and 2
- (4) None of the above

33. Which is not a secretion of exocrine gland

- (1) Ear wax
- (2) Mucus
- (3) Oil
- (4) Thyroxine

34. Which one is cell of bone :

- (1) Osteocyte
- (2) Odontocyte
- (3) Chondrocyte
- (4) Platelets

35. Wall of artery contain which type of muscle :

- (1) Striated muscle
- (2) Voluntary muscle
- (3) Smooth muscle
- (4) Skeletal muscle

36. Identify the given mouth part of cockroach:



- (1) Upper lip
- (2) Mandible
- (3) Hypopharynx
- (4) Lower lip

37. Match the column I and column II and choose correct answer:

Column - I	Column - II
(A) Squamous epithelium	(i) Nephrons
(B) Cuboidal epithelium	(ii) Endothelium of blood vessels
(c) Columnar epithelium	(iii) Bronchioles
(D) Ciliated epithelium	(iv) Lining of Stomach

- (1) A-iv, B-iii, C-i, D-ii
- (2) A-ii, B-i, C-iv, D-iii
- (3) A-ii, B-i, C-iii, D-iv
- (4) A-i, B-ii, C-iii, D-iv

38. Neck of cockroach is:

- (1) Flexible extension of prothorax
- (2) Rigid extension of mesothorax
- (3) Flexible extension of metathorax
- (4) Flexible extension of head

39. Which one is part of male reproductive system of cockroach:

- (1) Spermatheca
- (2) Vestibulum
- (3) Collateral gland
- (4) Ejaculatory ducts

40. Given below are two statements: one is labelled as Assertion (A) and the other is labelled as Reason (R).

Assertion (A): Squamous Epithelium is composed of single layer of cube like cells.

Reason (R): Cuboidal Epithelium Involve in function like secretion and absorption.

In the light of the above statements, choose the correct answer from the options given below

- (1) Both (A) and (R) are true but (R) is not the correct explanation of (A)
- (2) (A) is true but (R) is false
- (3) (A) is false but (R) is true
- (4) Both (A) and (R) are true and (R) is the correct explanation of (A)

41. Six highly chitinous plate like teeth are found in ... of cockroach:

- (1) Maxilla
- (2) Mandible
- (3) Gizzard
- (4) Rectum

42. The mosaic vision of cockroach has:

- (1) More sensitivity but less resolution
- (2) Less sensitivity but more resolution
- (3) Both sensitivity and resolution are high
- (4) Both sensitivity and resolution are low

43. Unpaired reproductive part of male cockroach is:

- (1) Testes
- (2) Phallic gland
- (3) Collateral gland
- (4) Vas deferens

44. Which statement is incorrect:

- (1) Labrum act as tongue in cockroach
- (2) Epithelial tissue has a free surface
- (3) Epithelial tissue provides a covering or a lining for some part of the body
- (4) The tissues are broadly classified into Epithelial, Connective, Muscular and Neural

45. Given below are two statements : one is labelled as Assertion (A) and the other is labelled as Reason (R).

Assertion (A) : Blood vascular system of cockroach is an open type.

Reason (R) : Blood vessel are poorly develop and open into space or Haemocoel and visceral organs located into the haemocoel are bathed in blood or haemolymph.

In the light of the above statements, choose the correct answer from the options given below

- (1) Both (A) and (R) are true but (R) is not the correct explanation of (A)
- (2) (A) is true but (R) is false
- (3) (A) is false but (R) is true
- (4) Both (A) and (R) are true and (R) is the correct explanation of (A)

46. Which one is product of ductless gland :

- (1) Mucus
- (2) Saliva
- (3) Milk
- (4) Homone

47. Adjacent cell communicate with each other by which junction :

- (1) Tight junction
- (2) Gap junction
- (3) Adhering junction
- (4) Ligament

48. How much part of neural tissue formed by neuroglia :

- (1) Less than 20%
- (2) More than 50%
- (3) Less than 30%
- (4) Less than 10%

49. Which statement is incorrect :

- (1) Sclerite of cockroach joined to each other by cartilage
- (2) Simple epithelium divided into three types
- (3) The compound epithelium consists of two or more cell layers
- (4) The squamous epithelium with irregular boundaries

50. Match the column I and column II and choose correct answer:

Column - I	Column - II
(A) Hepatic caeca	(i) 9 - 10
(B) Malpighian tubules	(ii) 13
(c) Oothecae	(iii) 100 - 150
(D) Heart chamber	(iv) 6 - 8

- (1) A-iv, B-iii, C-i, D-ii
- (2) A-iii, B-iv, C-i, D-ii
- (3) A-iii, B-iv, C-ii, D-i
- (4) A-iv, B-iii, C-ii, D-i

- **Answer key will be posted on our telegram channel [ANWER KEY](#)**
- **Video solution of the paper will be provided within 2-3 days of uploading, on our youtube channel [VIDEO SOLUTION](#)**
- **For guidance/mentorship – [CLICK HERE](#)**
- **IF ANY QUERY THEN CONTACT -- [@MEDICO_NITIN](#) , [@KAPILIAMC](#)**

